



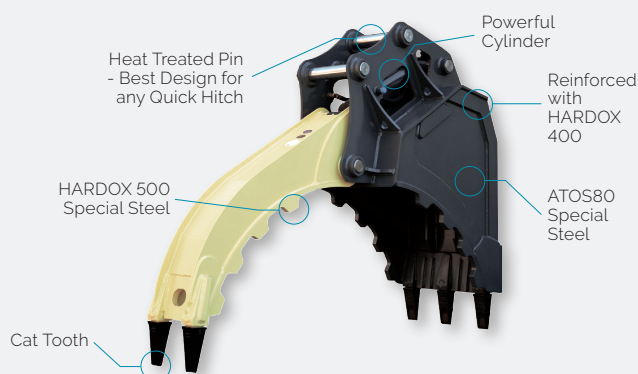
Fixed Bucket Grapple 3-50 TON

The **DAEHAN** Heavy Industry Fixed Bucket Grapple is lightweight, tough and versatile like no other grapple available in the New Zealand market. Manufactured from wear and tear-resistant steel and tried and tested in New Zealand's harshest environments, this fixed bucket grapple is a necessary attachment for all landscaping, demolition, pipe handling, land clearing and land development projects.



KEY FEATURES

- Manufactured from wear and tear resistant steel
- Specially designed large capacity cylinder and integrated control lever with operating buttons.
- Designed for versatile applications including landscaping, demolition, pipe handling, land clearing and land development projects.



Three Year Structural Warranty
(Non-abuse)



Wide Range of Critical Parts in Stock



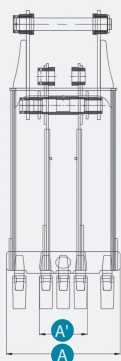
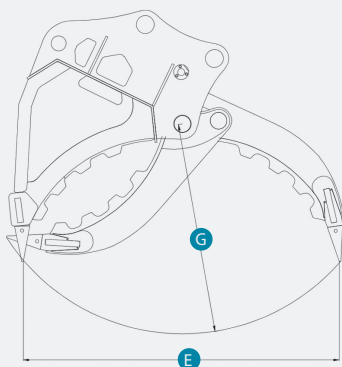
DAEHAN
ATTACHMENTS NZ

daehan.co.nz

SEE OVERLEAF FOR FULL SPECIFICATIONS

Fixed Bucket Grapple

3-50 TON



MODEL		UNIT	DHST 02	DHST 03	DHST 04	DHST 06	DHST 08	DHST 10	DHST 12	DHST 16	DHST 20
Weight		kg	130	260	300	660	1040	1210	1240	2110	2575
Jaw opening		m/m	810	1270	1385	1800	2100	2270	2350	2500	2700
A		m/m	320	460	475	630	810	815	900	1015	1175
A'		m/m	130	230	235	280	320	340	345	450	480
E		m/m	810	1270	1385	1800	2100	2270	2350	2500	2700
G		m ²	605	850	890	1145	1365	1485	1510	1660	1780
Pincer	Operating Pressure	Bar	170~250	170~250	190~280	200~350	220~350	220~350	220~350	220~350	220~350
	Recommandable Pressure	Bar	210	210	210	250	250	250	250	250	250
	Required Oil Flow	Lpm	40~60	40~60	40~60	90~110	100~180	120~200	120~200	120~200	120~200
Closing Force		Ton	13.4	11	14	25	33.5	39.5	39.5	46.5	46.5
Load Capacity		kg	800	1000	1000	6000	6000	10000	13500	16500	18000
Carrier		Ton	3~4	4~5	6~10	11~18	20~24	26~30	33~36	37~45	40~50
Bucket Capacity		m ³	0.04	0.13	0.15	0.32	0.6	0.71	0.73	1.11	1.25

• Specifications are subject to change without prior notice for improvement of quality



"I purchased a DAEHAN Fixed Bucket Grapple for my 20-ton excavator to assist with a major subdivision and the land clearing project. I have found the DAEHAN Fixed Bucket Grapple extremely lightweight and very tough, which was a key reason for choosing DAEHAN. I have certainly put it through its paces and have found it ideal for clearing

forestry slash, and it's now being used regularly for land development projects. I ordered this Grapple on a Thursday, and it was personally delivered to my yard the following Saturday by the DAEHAN Attachments NZ team - very impressed'.



GRANT PURVIS
G&B PURVIS LTD - OAMARU



Three Year Structural Warranty
(Non-abuse)



Wide Range of Critical Parts in Stock



DAEHAN
ATTACHMENTS NZ

daehan.co.nz